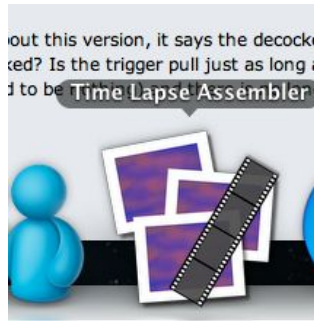
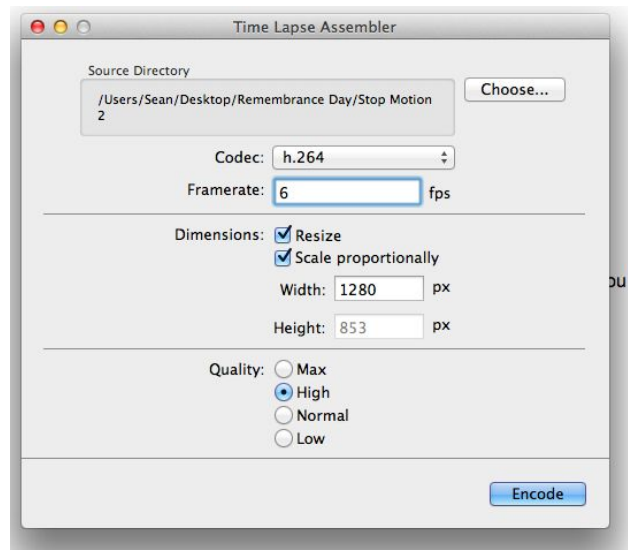


After shooting your production, you will be creating animated clips in either Time Lapse Assembler or Photoshop CS6. [Here](#) is a tutorial for CS6, below is a tutorial for Time Lapse Assembler.

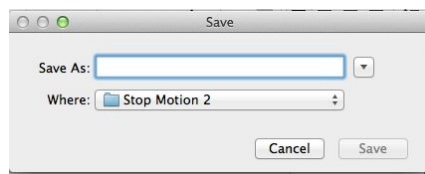
1. Have all the .jpgs that you want to include in your sequence in a folder
2. Open Time Lapse Assembler



3. Browse for the folder where your images are and set the framerate you would like to use. I suggest anywhere from 6-10 FPS



4. Decide where you would like the completed file to be kept. Remember, Organization is key!



5. You are now ready to import your time lapse sequence into the editor of your choice. Popular choices are Adobe Premiere Pro 6/CC, iMovie (08,09,11,13, or HD), or anything you are comfortable. If you are working in room 206, there will be multiple choices available for you.